

Change Order Request

1 ea. GE LM 6000 PC

Presented To:

Venezuela

Guarenas Power Plant

By

DERWICK

DERWICK ASSOCIATES CORP.



Proposal No. T-1009-A

June 11, 2010

**This document is privileged and contains confidential information intended for use only by
Guarenas**

1.0 Introduction

Derwick Associates Corp. ("DAC") has prepared a proposal for adding a second GE LM 6000 GTG to the Guarenas Power Plant. The scope of work includes the Engineering and installation of the following equipment:

- 1 ea. dual fueled GE LM 6000 PC Gas Turbine Generator package
- 1 ea. 13.8KV Generator Breaker
- 1 ea. 13.8/480 V Aux Transformer
- 1 ea. 480 V MCC
- 1 ea 125 V DC Batteries and Charger
- 1 ea LM 6000 Control Building
- 1 ea LO Cooling Tower
- 1 ea Exhaust Stack
- 1 lot Water Injection Pumps and Filters
- 1 lot DFO Injection Pumps and Filters
- 1 lot Fuel Gas Filter/Regulators

The following sections of this Change Order Request will provide more detail on the scope of this proposal.

Note: The Owner has purchased one (1) additional dual fueled GE LM 6000 PC Sprint Gas Turbine Generator package with associated facilities for this project. The unit and associated equipment are identified in the Table Below:

2.0 Gas Turbine Generator Sets Scope of Supply

2.1 LM 6000 PC Gas Turbine Generator

Owner will supply One (1) dual fueled GE LM 6000 PC Sprint gas turbine generator set including the following scope of supply:

- LM 6000 Dual fuel engine with water injection for NOx control
- Water injection for Sprint Performance
- Dual ventilation fans
- Electric hydraulic start skid
- Generator Lube Oil skid
- Liquid fuel pressurization skid
- Water injection pressurization pump skid
- Lube oil cooler/exchanger
- Free standing GTG Control Panel. Note: Contractor will supply modular control Building w/MCC, Batteries and Chargers.

Contractor will provide Turnkey EPC Services to purchase and install (1) the required Balance of Plant identified below and (2) to install Owner's provided equipment described above.

2.2 Scope of Supply and Detailed Division of Responsibility

Material/Responsibility	Qty	Description
--------------------------------	------------	--------------------

Owner:

1 Lot	Natural Gas at Gas Compression Header
1 Lot	Natural Gas for commissioning / start-up
1 Lot	Liquid Fuel for Commissioning / Start-up that meets GE Fuel Specifications
1 Lot	Treated Water at water treatment plant
1 Lot	Waste Water and Waste Oil Truck Removal

	1 Lot	Permits for Environmental, Transportation, Building, Operations, etc. to allow plant construction and commercial operations
	1 Lot	Construction & Commissioning Water and 480V three phase power
	1 Lot	Access Roads to site
	1 Lot	Import Duties and Taxes
	1 lot	Right of Way, easements, etc. to allow proposed interconnects as required
OWNER Provide /CONTRACTOR Install	1	<u>New GE LM 6000 PC Sprint (60Hz) Gas Turbine Generator</u> with Associated Equipment
	1	-Turbine Control Panel
	1	-Generator Control Panel and Protection Panel
	1 set	- 24 VDC Batteries and Chargers
OWNER Will Provide		
	1 Lot	Project Site free and clear of rock and ground water
	1 Lot	Industrial Water for Commissioning and Startup
	1 Lot	Diesel Fuel Supply for Commissioning and Startup
	1 Lot	Electrical Back Feed for Commissioning and Startup
	1 Lot	Waste Oil Disposal
	1 Lot	Waste Water Disposal
Contractor will Provide and Install		
Civil, Engineering & Construction:	1 Lot	Design Engineering and Construction Management of Contracted Labor including Safety, QA/QC, Project Schedule Management, Technical management, start-up, commissioning, systems turnover and performance testing.
	1 Lot	Civil earthwork, leveling, foundations, roadways, plant gravel, and paving
Mechanical:	1 set	GTG Tools
	1	LM 6000 GTG Exhaust Stack with Silencer
	1 Lot	Mechanical pipe, valves, and material including installation with contract labor
	1 Lot	Connection to Duplex 185 scfm Plant Service and Instrument Air Compressor
	1 Lot	Connection to 2000 gallon Underground Oily Water Separator System
	1 Lot	Connection to Firewater HDPE underground distribution system with hydrants, monitors, controls and foaming system.

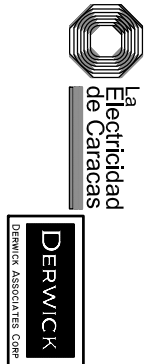
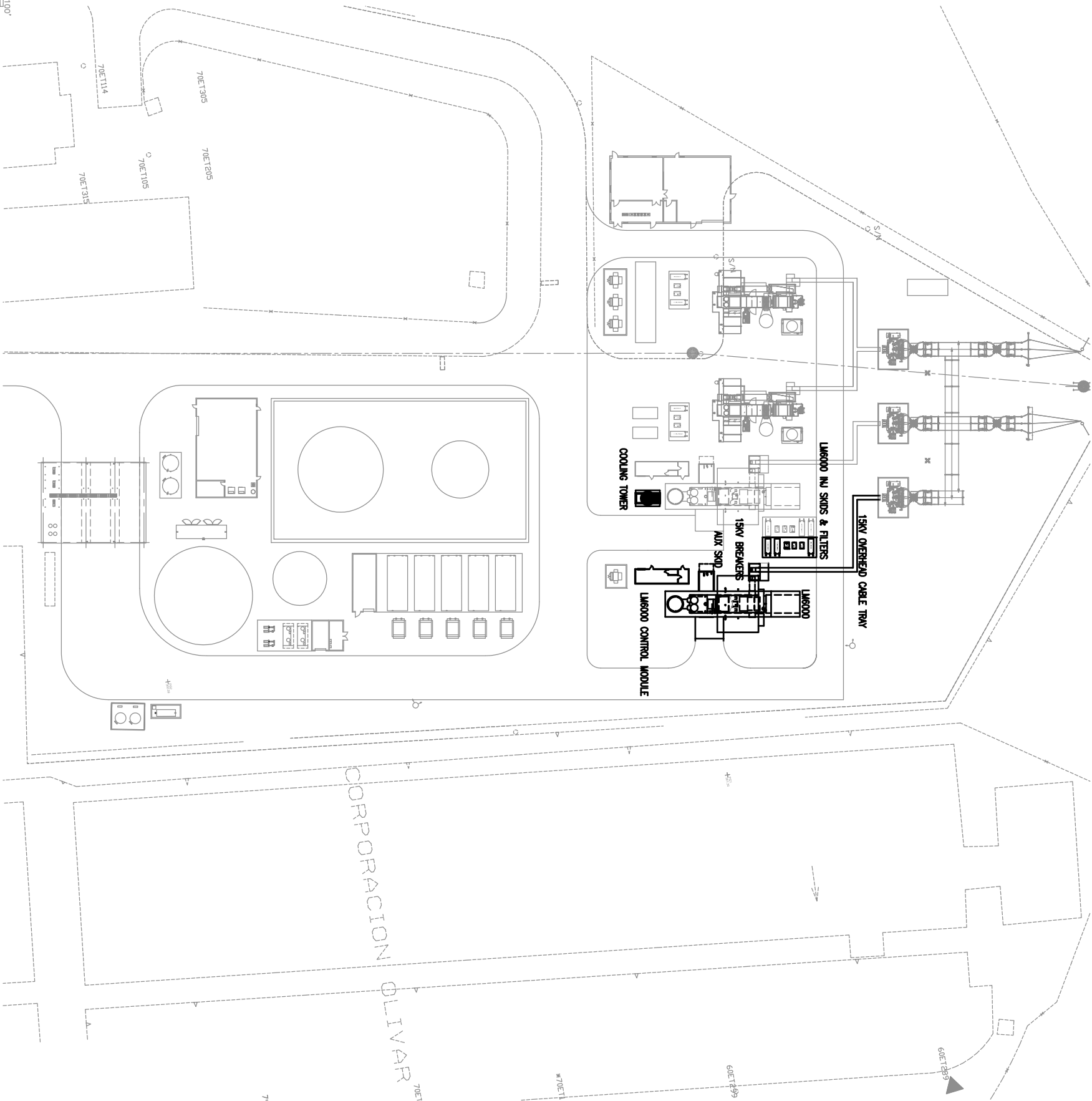
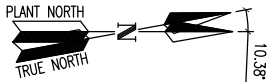
- 1 Raw Water supply pump
- 1 Raw Water Forwarding pump
- 1 LO Cooling Tower
- 1 Demin. Water Forwarding Pump

Electrical

- 1 DFO Filter Skid
- 1 13.8KV 3000 Amp Generator Breaker NEMA 3R
- 1 Lot Electrical wire, conduit, and cable including installation with contract labor
- 1 13.8 KV Aux Breaker
- 1 480 V Distribution Panel
- 1 LM 6000 Control Building with 480V MCC, Batteries and Chargers
- 1 BOP 480V MCC
- 1 480V 750 KVA expansion of existing Aux. Transformer
- 1 480V/120V/208V Aux Transformers
- 2 Area Lighting Poles each with (2) lights
- 1 Lot Cathodic Protection System
- 1 Lot Lightning Protection
- 1 Plant UPS System

Instrumentation:

- 1 Lot Plant Instrumentation- addition
- 1 Lot Interconnect to Plant DCS System
- 1 PBX Communications System - addition
- 1 Loud Speaker System – addition
- 1 Lot Fiber Optic Cables, Fittings & Terminators - expansion



© COPYRIGHT 2008. Preliminary SERVICES. ALL RIGHTS RESERVED.
THIS DRAWING IS THE PROPERTY OF DERWICK ASSOCIATES CORP. AND IS LOANED TO THE CLIENT FOR THE PROJECT ONLY. IT IS NOT TO BE REPRODUCED OR USED FOR ANY OTHER PROJECT WITHOUT THE WRITTEN PERMISSION OF DERWICK ASSOCIATES CORP. ANY REPRODUCTION OR USE FOR ANY OTHER PROJECT WITHOUT THE WRITTEN PERMISSION OF DERWICK ASSOCIATES CORP. IS STRICTLY PROHIBITED. THIS DRAWING IS THE PROPERTY OF DERWICK ASSOCIATES CORP. AND IS LOANED TO THE CLIENT FOR THE PROJECT ONLY. IT IS NOT TO BE REPRODUCED OR USED FOR ANY OTHER PROJECT WITHOUT THE WRITTEN PERMISSION OF DERWICK ASSOCIATES CORP. ANY REPRODUCTION OR USE FOR ANY OTHER PROJECT WITHOUT THE WRITTEN PERMISSION OF DERWICK ASSOCIATES CORP. IS STRICTLY PROHIBITED.

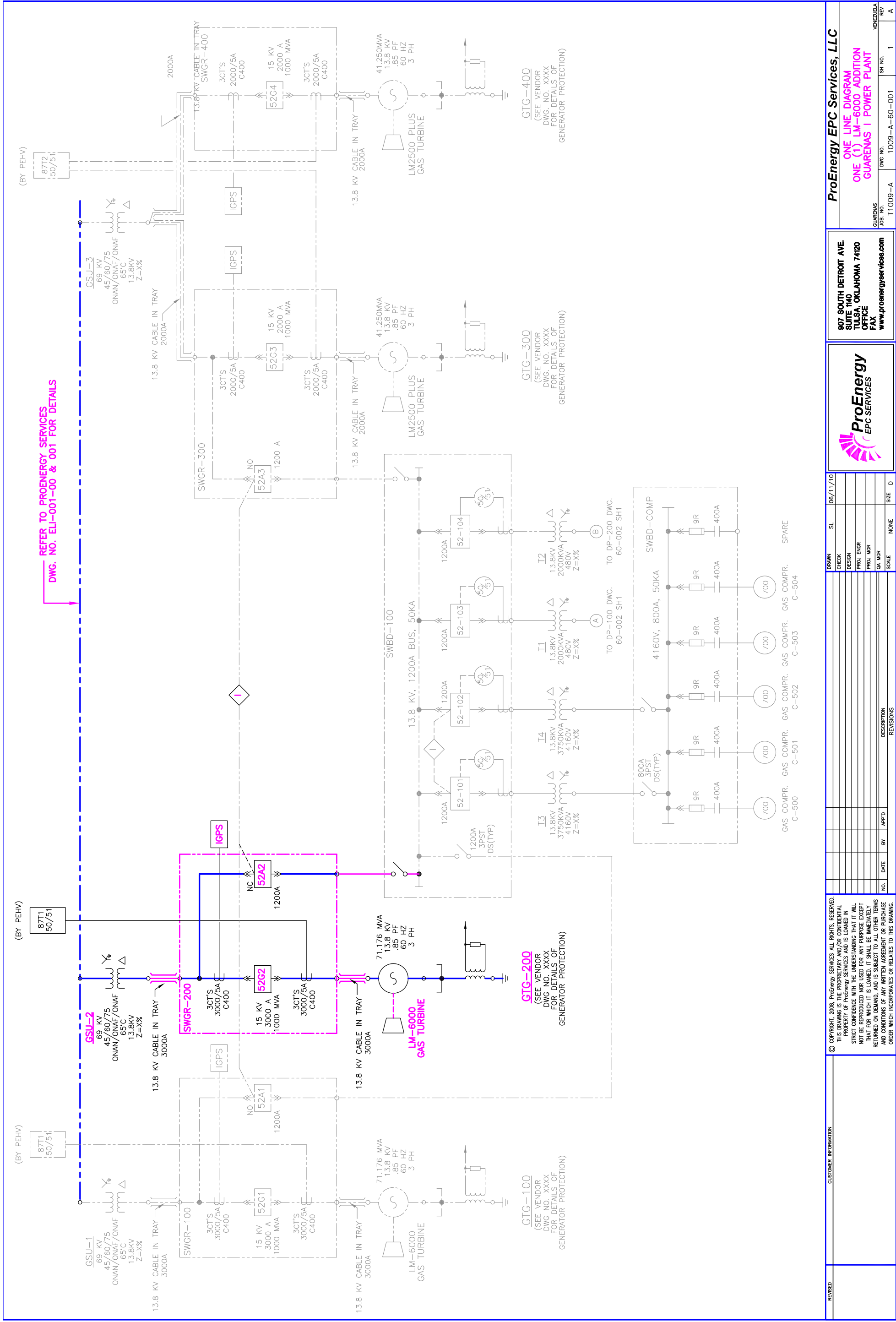
NO.	DATE	BY	APP'D	DESCRIPTION
0	6/11/10	LES		ISSUE FOR INFO
				REVISIONS


DRAWN	LES	6/11/10
CHECK	LES	6/11/10
DESIGN	LES	6/11/10
ENGINEER		
PROJ MGR		
QA MGR		
SCALE	1"=40'	SIZE D



807 S DETROIT
SUITE 1140
TULSA, OKLAHOMA 74120
OFFICE 880-828-5100
FAX 818-270-2839
www.proenergyepcservices.com

ProEnergy EPC Services, LLC			
GENERAL ARRANGEMENT PLAN			
LM6000 CHANGE ORDER T-1009A			
GUARENAS POWER PLANT			
GUARENAS	DWG NO.	SH NO.	REV
T-1009	10-001	1	0

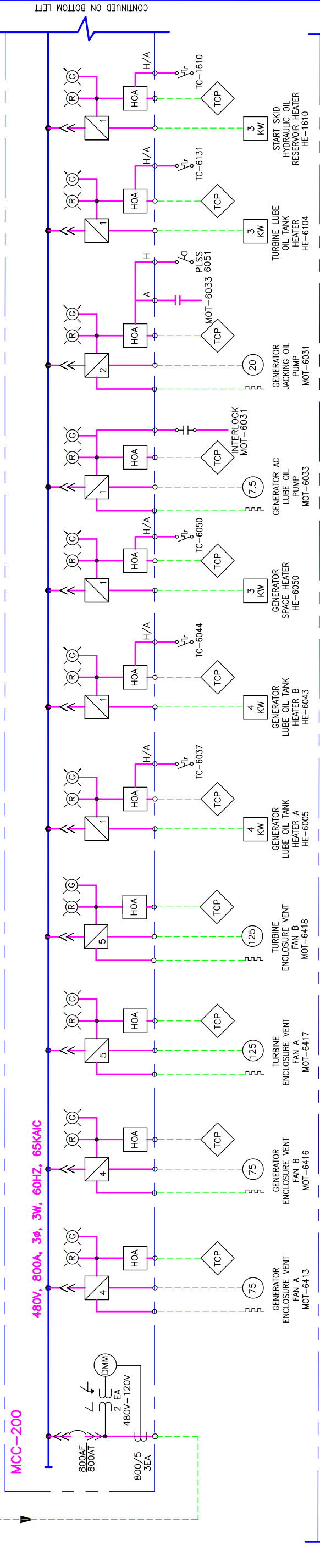


	REVISED	CUSTOMER INFORMATION						
<p>© COPYRIGHT, 2008, ProEnergy SERVICES ALL RIGHTS RESERVED. THIS DRAWING IS THE PROPRIETARY AND/OR CONFIDENTIAL PROPERTY OF ProEnergy SERVICES AND IS LOANED IN STRICT CONFIDENCE WITH THE UNDERSTANDING THAT IT WILL NOT BE REPRODUCED NOR USED FOR ANY PURPOSE EXCEPT AS SPECIFICALLY AUTHORIZED BY PROENERGY SERVICES. RETURNED ON DEMAND, AND IS SUBJECT TO ALL OTHER TERMS AND CONDITIONS OF ANY WRITTEN AGREEMENT OR PURCHASE ORDER WHICH INCORPORATES OR RELATES TO THIS DRAWING.</p>								
DRAWN	S.L.	06/11/10						
CHECK								
DESIGN								
PROJ ENGR								
PROJ MGR								
QA MGR								
NO.	DATE	BY	APP'D	DESCRIPTION	SIZE	D		
				REVISIONS	NONE			
<div style="float: right; width: 150px;">  ProEnergy EPC SERVICES </div> <div style="clear: both;"></div> <div style="text-align: center;"> 907 SOUTH DETROIT AVE. SUITE 140 TULSA, OKLAHOMA 74120 OFFICE FAX www.proenergyservices.com </div>								
ProEnergy EPC Services, LLC			ONE LINE DIAGRAM ONE (1) LM-6000 ADDITION GUARENAS I POWER PLANT					
			GUARENAS		JOB NO.	DWG NO.		SH NO.
			VENEZUELA		11009-A		1009-A-60-001	
							A	

FROM DP-200
SEE DWG 60-002 SH 1

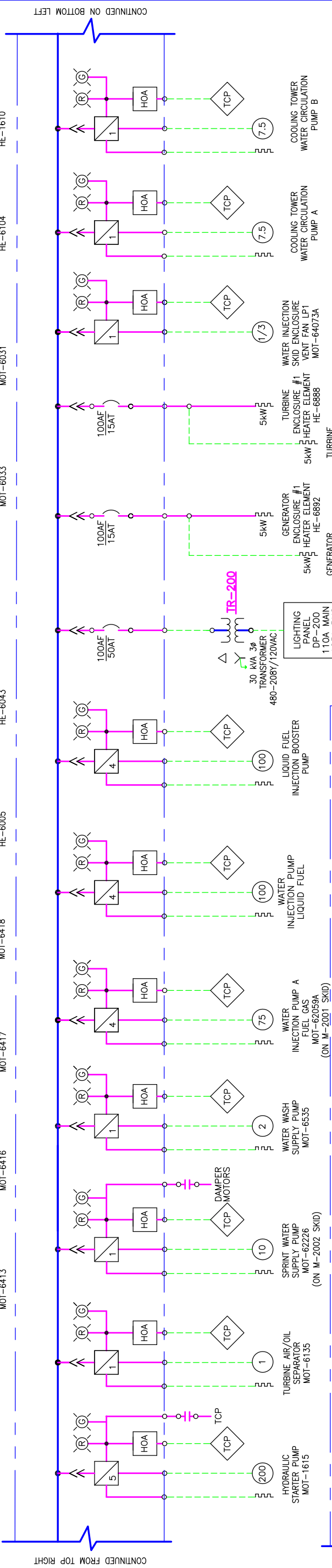
LM6000
MODULAR
BUILDING

480V, 800A, 3ø, 3W, 60HZ, 65KAIC



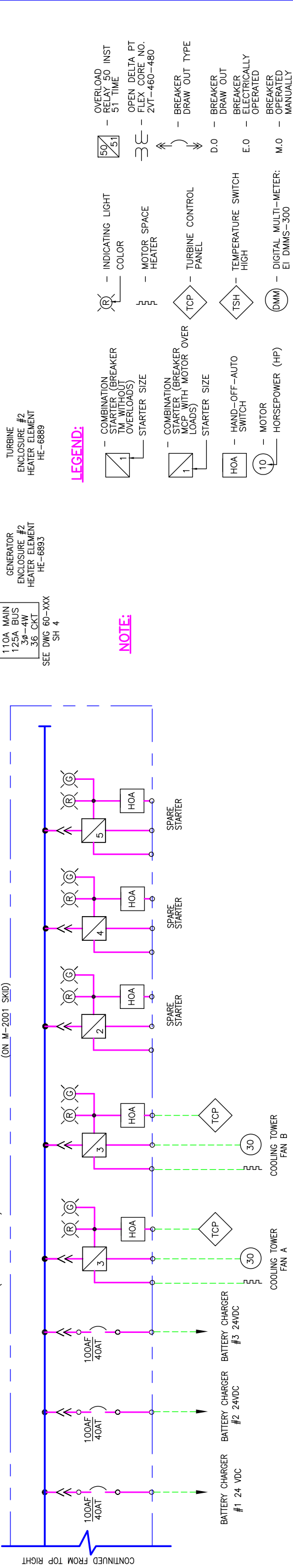
CONTINUED ON BOTTOM LEFT

CONTINUED FROM TOP RIGHT



CONTINUED ON BOTTOM LEFT

CONTINUED FROM TOP RIGHT



LEGEND:

- COMBINATION STARTER (BREAKER TM. WITHOUT OVERLOADS)
- STARTER SIZE
- COMBINATION STARTER (BREAKER MCP WITH MOTOR OVER LOADS)
- STARTER SIZE
- HOA
- HAND-OFF-AUTO SWITCH
- MOTOR
- HORSEPOWER (HP)
- INDICATING LIGHT
- COLOR
- MOTOR SPACE HEATER
- TURBINE CONTROL PANEL
- TEMPERATURE HIGH
- DIGITAL MULTI-METER: EI DMMS-300
- OVERLOAD RELAY 50 INST 51 TIME
- OPEN DELTA PT FLEX CORE NO. 2VT-460-480
- BREAKER DRAW OUT TYPE
- BREAKER DRAW OUT
- BREAKER ELECTRICALLY OPERATED
- BREAKER OPERATED MANUALLY

NOTE:

30 kVA 3ø
TRANSFORMER
480-208Y/120VAC
LIGHTING PANEL
DP-200
110A MAIN
125A BUS
3ø-4W
36 CKT
SEE DWG 60-XXX
SH 4

CUSTOMER INFORMATION

© COPYRIGHT, 2008, ProEnergy Services, LLC. ALL RIGHTS RESERVED.
THIS DRAWING IS THE PROPRIETARY AND/OR CONFIDENTIAL PROPERTY OF ProEnergy Services, LLC. AND IS LOANED IN STRICT CONFIDENCE WITH THE UNDERSTANDING THAT IT WILL NOT BE REPRODUCED NOR USED FOR ANY PURPOSE EXCEPT THAT FOR WHICH IT IS LOANED. IT SHALL BE IMMEDIATELY RETURNED ON DEMAND, AND IS SUBJECT TO ALL OTHER TERMS AND CONDITIONS OF ANY WRITTEN AGREEMENT OR PURCHASE ORDER WHICH INCORPORATES OR RELATES TO THIS DRAWING.

NO.	DATE	BY	APPRO	DESCRIPTION	REVISIONS

DRAWN	SL	06/11/10
CHECK		
DESIGN		
PROJ ENGR		
PROJ MGR		
QA MGR		
SCALE	NONE	SIZE D



907 SOUTH DETROIT AVE
SUITE 1140
TULSA, OKLAHOMA 74120
FAX
www.proenergyservices.com

ProEnergy EPC Services, LLC
ONE LINE DIAGRAM
ONE (1) LM-6000 ADDITION
GUARENAS I POWER PLANT
JOB NO. T1009-A
DWG NO. 1009-A-60-003
SH NO. 1
REV A
VENEZUELA